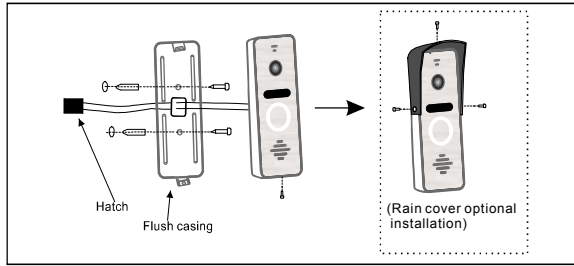
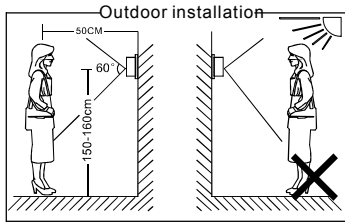
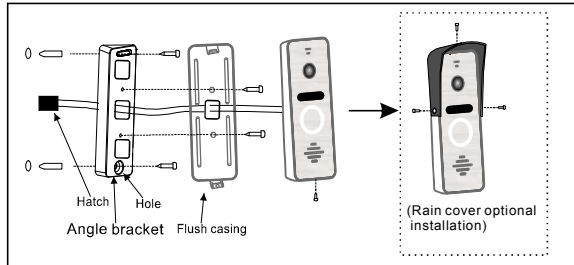


Installation diagram

Installation method A



Installation method B



NOTE:

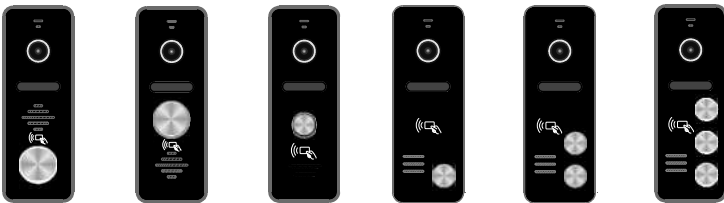
- 1: Keep more than 30cm away from AC power supply to avoid external interference
- 2: Switch off power supply before installation
- 3: Do not install the call panel in this environment. e.g. direct sunlight, contact rain, High temperature, high humidity, full of dust and chemistry corrosive

1. OVERVIEW

Without RFID panel



RFID panel



2. The main parameters

Camera	CCD/CMOS
Wide angle angle	1/3"(130°);1/2.7"(160°)
Definition(Hor.)	CVBS800TVL;AHD720P/960P/1080P
LEDs for night	IR LEDs(120°)
Main panel	20mm x48mmx133mm
Power consumption	200mA max. (10V~15V DC)
Power supplier	Supplied from indoor unit
Operation temp.	-40~+50℃
Installation	Surface/flush mount

NOTE:

- 1: If it is AHD call panel must be use AHD indoor monitor to correctly decode, otherwise no image display
- 2: If use the exit button function, the indoor monitor when standby state must have 5V power supply.

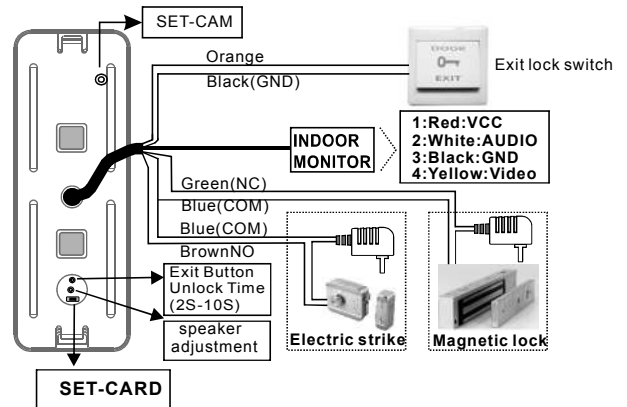
OPERATION INSTRUCTION

Video intercom system

Outdoor Camera

User Manual

3. Backplane wiring diagram



4. Instructions for use

- ① : **camera resolution setting method** (please confirm whether the machine has this function version first)
In the working state, each time the "SET-CAM" button is pressed for 3 seconds, the image will cycle in the following mode: 1080P-720P-CVBS; (Example: the current resolution is 1080P, to be set to 720P, in the working state of the camera, long Press and hold the "SET-CAM" button for 3 seconds, the resolution will switch to the 720 state, you can hear the IRCUT switching sound.
- ② : **RFID card function instructions** (please confirm if there is this function version)
 - 1: Short press the button "SET-CARD" to enter the setting add card mode. When you hear "Bi", please save the card after reading it in the sensing area within 30 seconds. short press the button to exit the setting mode; or automatically return to the standby mode after 30 seconds.
 - 2: Press and hold the "SET-CARD" for 3 seconds, then enter the delete all card mode, short press the button Three times, I heard the long "Bi-Bi-Bi" three times and deleted all the cards. Automatically returns to standby mode after 5 seconds
 - 3: Note: The maximum capacity of the RFID card: 200PCS